

Research article

## The dynamics of venous return and response to hypervolemia in the toad, *Bufo marinus* (L.)

Erin E Killorn and Daniel P Toews\*

Address: Department of Biology, Acadia University, Wolfville, Nova Scotia BOP 1X0, Canada

E-mail: Erin E Killorn - [ekillorn@tupmcm1.med.dal.ca](mailto:ekillorn@tupmcm1.med.dal.ca); Daniel P Toews\* - [dan.toews@acadiau.ca](mailto:dan.toews@acadiau.ca)

\*Corresponding author

Published: 10 October 2001

Received: 6 June 2001

*BMC Physiology* 2001, 1:13

Accepted: 10 October 2001

This article is available from: <http://www.biomedcentral.com/1472-6793/1/13>

© 2001 Killorn and Toews; licensee BioMed Central Ltd. Verbatim copying and redistribution of this article are permitted in any medium for any non-commercial purpose, provided this notice is preserved along with the article's original URL. For commercial use, contact [info@biomedcentral.com](mailto:info@biomedcentral.com)

### Abstract

**Background:** Venous return from the posterior region of amphibians travels by either two renal portal veins to the kidney or a central abdominal vein that drains into the hepatic portal system. The relative proportions of blood flow in these vessels has never been measured nor has a modification of flow been determined when venous return increases by changes in blood volume during hypervolemia or during increased volume input from the posterior lymph hearts.

**Results:** Venous return from the posterior region of *Bufo marinus* was measured under resting conditions and in response to a systemic hypervolemia. Doppler flow probes were positioned on the renal portal and ventral abdominal veins, and flow was recorded as injections of artificial plasma equaling 100% of the animal's plasma volume were administered through the sciatic artery. Resting flow was found to be  $5.54 \pm 2.03 \text{ ml min}^{-1} \text{ kg}^{-1}$  in the paired renal portal veins, and  $7.31 \pm 0.89 \text{ ml min}^{-1} \text{ kg}^{-1}$  in the ventral abdominal vein. While renal portal flow was found to increase by a factor of 2.4 times during the first 10 min of hypervolemia, ventral abdominal flow only increased by a factor of 1.3.

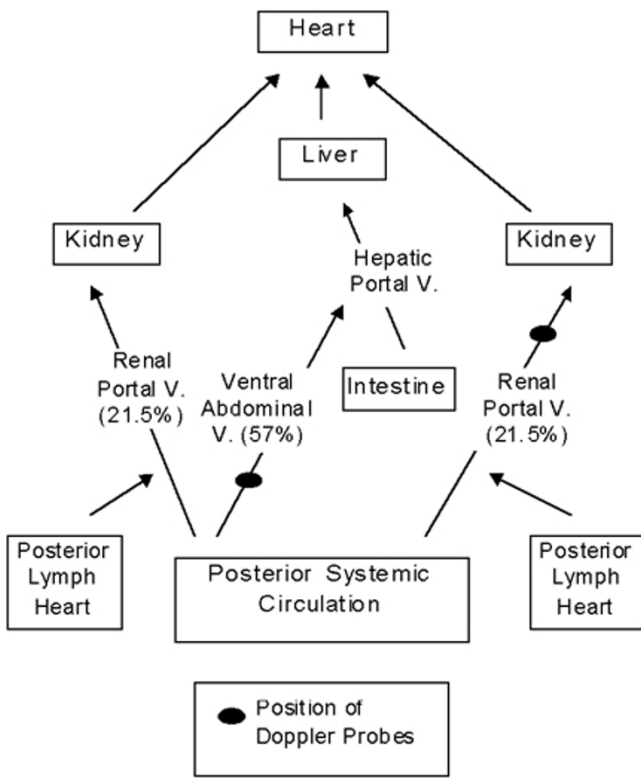
**Conclusions:** Our results quantify the contribution to circulation from posterior venous return in the toad *Bufo marinus*. A preferential movement of excess fluid through the renal portal pathway was also demonstrated, supporting the possibility of water elimination via the renal portal circulation, especially during periods of high water influx into the animals.

### Background

The distribution of blood flow through the amphibian body is crucial to many vital homeostatic functions, including those involving respiration, nutrition and elimination of unwanted materials. Although blood flow has been quantified for the primary arterial components of the circulatory system, the magnitude and partitioning of venous return from the posterior regions through several major organs is unknown. Blood returning from this area in an anuran amphibian may pass through one of

two major pathways; the first carrying blood through the hepatic portal system, and the second traversing the kidneys *via* the renal portal system, a component of circulation of relatively unknown function [1].

Through direct measurement of arterial flow in *Bufo marinus*, West [2] determined cardiac output to be  $57.2 \text{ ml min}^{-1} \text{ kg}^{-1}$ . Aortic blood flow represented 44.9% of this value, with the pulmocutaneous artery carrying 48.4% and the carotid artery 8.0% of cardiac output [2].



**Figure 1**  
 General scheme of circulation in *Bufo marinus* showing major pathways of venous return from the posterior region. Placement of Doppler flow probes is indicated. Figures in brackets represent percentages of flow returning through the specified pathways from the posterior systemic circulation. Abbreviation: vein (V.).

Of blood pumped to the posterior of the animal through the aorta, a significant amount passes through vessels surrounding the intestine and through the kidneys *via* the renal arteries. The remaining blood bathes tissues of the abdomen and hind limb region and returns to the heart through the two main pathways, the renal portal and ventral abdominal veins [1].

The common pelvic and femoral veins join to form the renal portal veins, just distal to the drainage site for the posterior lymph hearts into the circulation (Fig. 1) [1]. The renal portal veins run anteriorly along the kidneys, producing networks of vessels that cover the dorsal surface of the organs [3]. As the branched vessels traverse the kidneys, they give rise to peritubular vessels, which surround the kidney nephra. Deeds *et al.* [4] found that in the perfused bullfrog kidney, the renal portal circulation contributed up to 72% of the perfusate, indicating the apparent importance of this portal circulation to renal blood flow.

The perfusion of the renal portal vessels through the kidneys is still uncertain. However, it is generally accepted that the efferent arterioles from the glomerular capillaries empty into the peritubular capillaries, serving as a link between arterial and portal circulations [5]. Although it has been suggested that this close association may allow for filtration of renal portal blood, Deeds *et al.* [4] found that in the perfused bullfrog kidney, only 0.52% of the filtrate was derived from the portal perfusate, likely due to the high resistance bridge between the two circulations. Efferent renal veins eventually collect the bulk of renal blood from the peritubular capillaries, and join to form the posterior vena cava [1].

The ventral abdominal vein represents an alternate pathway for venous return from the posterior region (Fig. 1). This vein runs anteriorly from the junction of the common pelvic veins, and joins the hepatic portal system as it enters the liver [1]. The common pelvic and femoral veins have interconnections, providing a link between the two venous return pathways [1]. Ohtani and Naito [3] have suggested that the connection may serve as a means of delivering blood from the ventral abdominal vein to the kidneys.

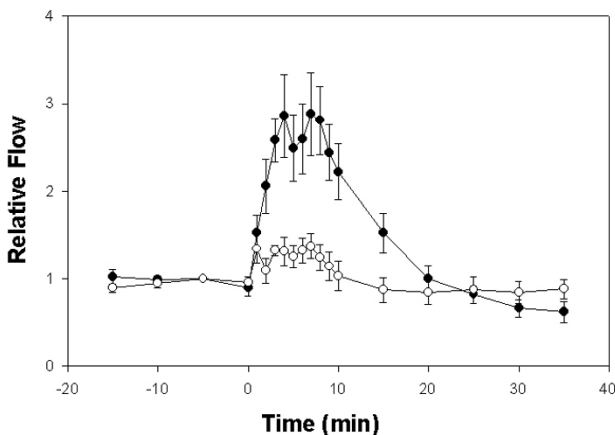
The delicate balance between water loss and uptake in amphibians makes an understanding of venous return from this region even more significant. Terrestrial amphibians show a behavior known as the water absorption response, using a portion of their ventral skin called the pelvic patch to take up extraneous water [6]. Although it has long been assumed that this external water moves into the circulatory system, one study shows movement of tritiated water directly into the lymph sacs from the environment [7]. The connection of lymphatic and circulatory systems through the renal portal veins has elicited suggestions of rapid elimination of excess incoming fluid *via* the renal portal vessels [8].

This study will measure flow through both the renal portal and ventral abdominal veins in the cane toad, *Bufo marinus*, using Doppler flow probes, to determine relative contributions of the two main pathways to venous return from the posterior regions (Fig. 1). An arterial volume load will also be performed in order to examine possible physiological consequences of volume stress on venous return.

**Results**

**Resting blood flow**

Values for resting renal portal and ventral abdominal venous blood flow were determined using 5 min pre-injection levels. Measured flow from a single renal portal vessel was doubled for each individual. Throughout the text, all mention of renal portal blood flow refers to dou-



**Figure 2**

Effect of systemic hypervolemia on mean relative renal portal blood flow and relative ventral abdominal blood flow as compared with control values of *Bufo marinus* ( $n = 8$ ). Filled circles denote mean relative renal portal blood flows and open circles show mean relative ventral abdominal flows. Injection was administered at  $t = 0$  and lasted 4.5 to 5.5 min. All values are expressed as means  $\pm$  S.E. The 5 min pre-injection values were used as control values for both relative blood flow determination and statistical analysis.

bled values. Renal portal venous flow was  $5.5 \pm 2.0$  ml  $\text{min}^{-1} \text{kg}^{-1}$ , while flow in the ventral abdominal vessel was  $7.3 \pm 0.9$  ml  $\text{min}^{-1} \text{kg}^{-1}$ .

#### Blood flow during hypervolemia

Following an injected 100% increase in plasma volume there were significant increases in blood flow in ventral abdominal and renal portal veins during the first 10 min period but not in the time following 10 min post infusion (Fig. 2). Flow in the renal portal veins increased by a factor of 2.4 ( $t_{14} = 6.6$ ;  $p < 0.001$ ) and in the ventral abdominal vein by a factor of 1.3 ( $t_{14} = 3.36$ ;  $p = 0.0047$ ). Following the 10 min post infusion period blood flow in all veins decreased rapidly and flows did not differ significantly from the pre infusion level ( $p > 0.29$ ).

#### Deviation from resting renal portal blood flow pattern

Blood flow in approximately 3/4 of the renal portal venous flow tracings, from 30 to 90 min post injection, showed periods where a deviation from the normal pattern was apparent (Fig. 3). This pattern involved sharp pulsatile increases in blood flow, distinguishing these tracings from the normal, slow wave pulsations seen in the simultaneous ventral abdominal tracings and in the resting renal portal and ventral abdominal venous tracings. The rate of renal portal pulsations was  $48.0 \pm 6.3$  beats  $\text{min}^{-1}$ . The rate of slow wave pulsations in the ven-

tral abdominal vein during the same time period was  $23.3 \pm 4.4$  beats  $\text{min}^{-1}$ . The resting rate of slow wave pulsation, identical in both vessels, was  $19.5 \pm 3.0$  beats  $\text{min}^{-1}$ , calculated using 10 min pre-injection values. The sharp pulsatile increases above baseline renal portal venous levels generated flows of  $6.2 \pm 2.9$  ml  $\text{kg}^{-1} \text{h}^{-1}$ , and stroke volumes of  $0.0018 \pm 0.0006$  ml  $\text{kg}^{-1}$ .

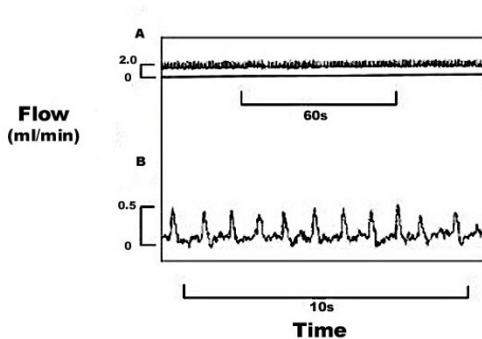
#### Discussion

The pathway of venous return from the posterior regions of *Bufo marinus* is via either the renal portal or hepatic portal systems before returning to the heart [1]. Resting blood flow in the two renal portal vessels combined was quite similar to that of the single ventral abdominal vein (which drains into the hepatic portal vein), with a slightly higher value observed for the ventral abdominal vessel. Total flow in the two vessel systems was  $12.85$  ml  $\text{min}^{-1} \text{kg}^{-1}$ , which comprises the total blood flow returning from the hind limb region of the toad. Ventral abdominal flow accounted for 57% of this venous return, with renal portal flow contributing the remaining 43% (Fig. 1).

West [2], using similar techniques to those used in this study, found cardiac output in *Bufo marinus* to be  $57.2$  ml  $\text{min}^{-1} \text{kg}^{-1}$ , with aortic blood flow being  $26.8$  ml  $\text{min}^{-1} \text{kg}^{-1}$  [2]. Using values obtained in this study, venous return from the hind limbs of the toad would thus represent approximately 1/4 of cardiac output.

When blood flow was examined following an infused doubling in plasma volume, both renal portal and ventral abdominal blood flow increased significantly during the 10 minute post infusion period but flow in the vessels leading to the kidneys was greater. The site of injection, the existence of a vascular connection between the two flow pathways and the large volume of fluid injected would support an equal distribution of excess fluid in both pathways. Our results strongly suggest a preferential movement of fluid through the renal portal system.

A favored movement of fluid through the renal portal veins would support the hypothesis that, in a natural aquatic setting, the rapid elimination of incoming water could be made possible by the renal portal system [8]. Carter [8] postulates that this excess water may move from the peritubular capillaries into the tubular lumen due to osmotic concentration differences, and therefore be excreted as urine. In this case, fluid would move in a preferred direction such that its rapid elimination is maximized. It has also been suggested that the femoral vein may serve as a functional connection between the renal portal and ventral abdominal veins [3]. This would seem to be supported if increased venous flow in the hind limbs is primarily directed through the renal portal veins. This connection could then serve as a means for



**Figure 3**

Flow tracings from the renal portal vein of *Bufo marinus* showing sharp extra pulsations at: A) 50 min post injection, flow values shown for renal portal vein; and B) 55 min post injection with recording expanded, flow values shown for pulsations above resting renal portal flow. The injection was performed at  $t = 0$  min. Chart speeds are: A)  $1 \text{ mm sec}^{-1}$ ; and B)  $10 \text{ min sec}^{-1}$ .

delivery of increased volumes of blood to the kidneys, allowing for the elimination of excess fluid.

Interestingly, the pattern of venous blood flow observed in both of the vessels throughout the experiments was a regular, slow-wave type pulsation. Previous work has shown heart rate in *Bufo marinus* to be  $39.9 \text{ beats min}^{-1}$  and lung ventilation rate to be  $16.3 \text{ ventilations min}^{-1}$  in normoxic conditions [9]. The calculated resting rate of  $19.5 \pm 3.0 \text{ pulsations min}^{-1}$  in the vessels appears closer to values for lung ventilation, however the rhythmic nature of the pulsation pattern seems consistent with changes due to heart contraction. Although we did not monitor lung ventilation, it is possible that ventilatory pressure changes within the toad result in regular oscillations in venous flow. Pulsations in flow due to negative pressure from the heart, however, seem unlikely, as both of the veins studied branch into portal systems before emptying into the vena cava.

Much of the speculation on pulsation patterns arose directly as a result of the observation of flow "spikes" in the renal portal tracings, which appeared as flow returned to normal after hypervolemia. The sharp extra pulsations observed were less rhythmic than the resting pulsations and contrasted with the flow tracings recorded simultaneously in the ventral abdominal vein. The pattern of sharp, irregular peaks corresponds remarkably with tracings observed when lymph flow is monitored directly from lymph heart efferent vessels using similar techniques [10]. Williams *et al.* [11] found that 50 min after a

doubling in plasma volume, lymph heart rate was approximately  $50 \text{ beats min}^{-1}$ , consistent with the "spike" rate of  $48.0 \pm 6.3 \text{ pulsations min}^{-1}$  calculated in this study during a similar time frame. It would appear that these tracings reflect contributions to renal portal blood flow by lymph, which is ejected from the nearby posterior lymph hearts.

Previous measurement of lymph heart function in response to systemic hypervolemia has shown lymph flow from a single posterior heart to be  $20.7 \text{ ml kg}^{-1} \text{ h}^{-1}$  and stroke volume to be  $0.0074 \text{ ml kg}^{-1}$  at the 50 min post-injection mark [11]. Our values, determined through measurement of flow peaks above baseline renal portal flow, are considerably lower, with lymph flow being  $6.2 \text{ ml kg}^{-1} \text{ min}^{-1}$ , and stroke volume  $0.0018 \text{ ml kg}^{-1}$ . These measurements of lymph flow may vary due to a more "downstream" location and the indirect method of lymph flow measurement used in this study. In addition lymph heart flow "spikes" in the renal portal veins were not visible under normal resting conditions. Williams *et al.* [11] found that, 50 min following a 100% increase in plasma volume, lymph flow was increased, although this change was not significant. It is possible that these sharp pulsatile increases in flow are peaks of the lymph heart systolic output, which has been increased such that it becomes visible, superimposed upon the larger flow of the renal portal vein.

The contribution of lymph flow to renal portal flow can also be considered with respect to resting state. Jones *et al.* [10] found lymph flow in *Bufo marinus* under normal conditions to be  $25.9 \text{ ml kg}^{-1} \text{ h}^{-1}$  from a single posterior lymph heart. Using renal portal flow values measured in this study, it is estimated that almost one-sixth of the renal portal circulation consists of fluid originating in the posterior lymph hearts.

## Conclusions

The shift in distribution of blood flow from the posterior end of the toad during volume stress demonstrates the dynamic nature of the anuran circulatory system. The possibility of the elimination of excess water *via* the renal portal system illustrates the necessity of a greater understanding of the association between lymphatic and circulatory systems. This association was clearly emphasized by the quantification of lymphatic function within the circulatory system that was demonstrated in this study.

## Material and methods

### Animals

Cane toads, (*Bufo marinus*, L.; 245–326 g hydrated mass), were obtained from commercial suppliers (Boreal Laboratories, St. Catherine's, ON, Can.; Charles D. Sulli-

van Co. Inc., Nashville, TN, USA). Animals were maintained in fiberglass aquaria (0.9 m × 0.6 m × 0.6 m) filled with sand to a depth of approximately 5 cm, and allowed free access to water. Toads were force fed raw beef liver once a week, the water was changed weekly and the sand was replaced every second week.

### **Surgical procedure**

Toads of either sex were chosen for experimentation and anaesthetized in a solution of 2 g l<sup>-1</sup> of aminobenzoic acid ethylester (MS-222, Sigma Chemical Co.) and 2 g l<sup>-1</sup> of NaHCO<sub>3</sub> in tapwater until the corneal reflex was absent.

At a point on the median line of the ventral surface of the toad, 2 cm anterior to the juncture of the torso with the hind limb, a transverse incision of about 2 cm was made and the skin was separated from the underlying tissue. A longitudinal incision of about 0.5 cm was made through the muscle at a position 0.5 cm lateral to the ventral abdominal vein, and a small length of this vein was separated from the abdominal wall by removal of the connective tissue. The vein was fitted with a Doppler flow probe (silastic cuff, i.d. 1.0 mm; Iowa Doppler Products, Iowa City, IA, USA) and the probe was secured to the musculature between the ventral abdominal wall and the skin using 5-0 gauge silk sutures. The leads of the probe were tied down to the skin in 3 locations, and the initial incision was closed using 3-0 gauge silk sutures.

On the dorsal surface an incision was made just above the junction of the renal portal vein and the kidney, just anterior to a posterior lymph heart. As with the ventral abdominal vein, the renal portal vein was dissected free and fitted with a Doppler flow probe (silastic cuff, i.d. 0.8 mm; Iowa Doppler Products, Iowa City, IA, USA), which was placed as close to the point of entry of the vein into the kidney as possible without restriction of flow. The probe was secured to the surrounding musculature, the leads of the probe were tied down to the skin in 3 locations, and the incision was closed. For arterial infusion purposes, the sciatic artery was then cannulated using previously described methods [12].

Following surgery the animals were placed under running water to recover, and then moved to 6 L covered plastic boxes containing 2-3 cm of dechlorinated tap water and several air ventilation and lead exit holes cut in the top. Animals were allowed to recover for a minimum of 18 h following surgery. During all experiments animals were freely moving and unanaesthetized in the chambers.

### **Experimental procedure**

For measurement of venous flow, the leads of the Doppler flow probes were connected to a pulsed Doppler

flowmeter (model 545c-4; Bioengineering, University of Iowa), which was then connected to a two-channel Gould chart recorder.

Resting renal portal and ventral abdominal venous flows were recorded for 15 min, at a chart speed of 1 mm s<sup>-1</sup>. Following this period, the animals were volume loaded through the sciatic artery cannula with a solution of Bovine Albumin (3.60 g 100 ml<sup>-1</sup>; [13]) in MacKenzie's saline [14]. Plasma volume was doubled, assuming 7.4 ml of plasma for 100 g of animal [15]. An infusion pump was used to inject fluid over a period of 4.5 to 5.5 min. Measurements were recorded for 90 min from the onset of injection, and flow was determined at time 0, then every min for 10 min, every 5 min until 45 min and at 60, 75 and 90 min. For those animals in which the flow probes remained stable for a 24 h period following the initial trial, a second injection was performed. This injection was identical to the initial one, and measurements were taken at the times outlined for the first injection.

Following experimentation, each Doppler flow probe was calibrated by removal of the vessel from the animal with the probe still in place. The vessel was then cannulated with polyethylene tubing (PE-100 for the ventral abdominal vein; PE-50 for the renal portal vein), and whole blood from an exsanguinated toad was perfused through the vessel using an infusion pump. This allowed determination of absolute flow in ml min<sup>-1</sup> for each probe and animal.

### **Statistical analysis**

To correct for large differences among toads in the basal flow rates for both arteries, we standardized all observations by dividing by the flow rate at t = -5 min. This helps to correct for differences resulting from animal size and physical condition at the time of experimentation. We then further simplified the analysis by dividing the set of experiments into three groups – prior to the infusion, 0-10 min post infusion, and >10 min post infusion, and calculated the mean flow rate for each artery, for each toad, over each period.

Data were analyzed using a linear mixed-effects model in Splus. Toads were considered random effects, and the period of time was considered a fixed effect. Differences between the two levels of treatment (immediately post infusion, and > 10 min post infusion) were assessed by fitting "treatment" contrasts (with the pre-treatment mean being considered a control), and assessing the significance of the two parameter estimates. Separate models were fit for the two veins.

## Acknowledgments

Financial support for this work was provided by an NSERC operating grant to D.P.T. and an N.S.E.R.C. Undergraduate Student Research Award to E.E.K. Thanks are expressed to Judy Jones for technical assistance and Philip Taylor for statistical assistance.

## References

1. Roth JJ: **Vascular supply to the ventral pelvic region of anurans is related to water balance.** *J. Morphol* 1973, **140**:443-460
2. West NH: **Cardiac output in conscious toads (*Bufo marinus*).** *J. Exp. Biol* 1994, **186**:315-323
3. Ohtani O, Naito I: **Renal microcirculation of the bullfrog, *Rana catesbiana*. A scanning electron microscope study of vascular casts.** *Archiva Histologica Japonica* 1980, **43**:319-330
4. Deeds DG, Sullivan LP, Fenton RA, Tucker JM, Cuppage FE: **Function and structure of perfused bullfrog kidney.** *Am. J. Physiol* 1977, **233**:481-490
5. Morris JL, Campbell G: **Renal vascular anatomy of the toad (*Bufo marinus*).** *Cell Tissue Res* 1978, **189**:501-514
6. Hillyard SD, Hoff Kvs, Propper C: **The water absorption response: A behavioral assay for physiological processes in terrestrial amphibians.** *Physiol.Zool* 1998, **71**:127-138
7. Wentzell LA, McNeil SA, Toews DP: **The role of the lymphatic system in water balance processes in the toad *Bufo marinus* (L.).** *Physiol.Zool* 1993, **66**:307-321
8. Carter D: **Structure and function of the subcutaneous lymph sacs in the Anura (Amphibia).** *J. J. Herp* 1979, **13**:321-327
9. Boutilier RG, Toews DP: **The effect of progressive hypoxia on respiration in the toad *Bufo marinus*.** *J. Exp. Biol* 1976, **68**:99-107
10. Jones JM, Gamperl AK, Farrell AP, Toews DP: **Direct measurement from the posterior lymph hearts of hydrated and dehydrated toads (*Bufo marinus*).** *J. Exp. Biol* 1997, **200**:1695-1702
11. Williams JG, Jones JM, Toews DP: **Effects of hypervolemia on cardiac on posterior lymph heart function in the toad *Bufo marinus* (L.).** *Physiol. Zool* 1998, **71**:458-468
12. Boutilier RG, Randall DJ, Shelton G, Toews DP: **Acid-base relationships in the blood of the toad *Bufo marinus*. I. The effects of environmental CO<sub>2</sub>.** *J. Exp. Biol* 1979, **82**:331-344
13. Hillman SS, Zygmunt A, Baustian M: **Transcapillary fluid forces during dehydration in two amphibians.** *Physiol. Zool* 1987, **60**:339-345
14. de la Lande IS, Tyier MJ, Pridmore BJ: **Pharmacology of the heart of *Tiligua (Trachysaurus) rugosa* (the sleepy lizard).** *Australian Journal of Experimental Biological Medical Science* 1962, **40**:129-137
15. Baustian M: **The contribution of lymphatic pathways during recovery from hemorrhage in the toad *Bufo marinus*.** *Physiol. Zool* 1988, **61**:555-563

Publish with **BioMed Central** and every scientist can read your work free of charge

"BioMedcentral will be the most significant development for disseminating the results of biomedical research in our lifetime."

Paul Nurse, Director-General, Imperial Cancer Research Fund

Publish with **BMC** and your research papers will be:

- available free of charge to the entire biomedical community
- peer reviewed and published immediately upon acceptance
- cited in PubMed and archived on PubMed Central
- yours - you keep the copyright



Submit your manuscript here:

<http://www.biomedcentral.com/manuscript/>

[editorial@biomedcentral.com](mailto:editorial@biomedcentral.com)